

MAINTAINED EDGE ILLUMINATION SIGNS



TECHNICAL CHARACTERISTICS

	KLR-20	KLD-22	KLD-30
Mains voltage	220-240V AC/50-60Hz		
Maximum power consumption	3.2W/3.4VA		
Battery (Ni-Cd)	3.6V/1Ah		
Battery protection	Overcharging and deep discharging protection		
Indications / Control	Charge LED/ Test button		
Recharging time	24h		
Minimum emergency duration	3h		
Viewing distance	20m.	22m.	30m.
Light source intensity	75lm		
Degrees of cover protection	IP54		
Produced in accordance with	EN 60598-1, EN 60598-2-22, EN 55015, EN 61547, EN 61000-3-2, EN 61000-3-3, EN 1838		
Operation temperature range	5 to 40 °C		
Relative humidity	up to 95%		
Construction materials	ABS/PC, PC	ABS/PC plexiglass	
External dimensions (LxWxH)	254x35x170mm	240x35x179mm	310x35x216mm
Typical weight	522gr.	696gr.	917gr.
Guarantee	3 years (1 year for the battery)		

Thank you for your trust in our products Olympia Electronics - European manufacturer

GENERAL

These luminaires are used indoors (ta 40°C) on the wall, where emergency light is needed. Each luminaire must be permanently connected to mains power supply. In normal operation the battery is charging. In case of a mains power supply failure the luminaire will light the led strip automatically in emergency mode. When the mains power supply is restored the device turns to normal operation.

Non Maintained / maintained operation

there is an option to select the non maintained or maintained operation by placing the jumper to the appropriate position according to figure 3 (see page 4).

INSTALLATION

To install the luminaire follow the installation instructions on page 4.

ATTENTION!!!

- Operations for installation, maintainance or testing must be done by authorized personnel only.
- The device must be connected to the mains power supply through a fuse dependent by the total amount of the line's power load.

3. It is suggested to check every month the indication LED for battery charging, and by pushing the TEST button to check the emergency circuit. The led strip should light as long as the TEST button is pressed and the indication LED for battery charging should be off. If the luminaire doesn't work as described above contact the installer.

4. It is suggested to check every 6 months the minimum autononous duration by disconnecting the mains power supply. Count the time that the led strip lights and in case of less time than the nominal autonomy, the battery must be replaced. If the measured time is considerably less than the nominal autonomy contact the installer. In case of battery or led strip replacement, these must be replaced by parts of the same type, by the manufacturer or by a competent person.

5. In case of inactive use for a period greater than 2 months, disconnect the battery by pulling out the battery's connector.

6. It is not allowed to discard batteries in to common trash bins, they must be discarded only in battery recycling points. Do not incinerate.



Test Button- Manual Test

As the luminaire is in normal operation, by pressing the test button shortly, you can check the emergency operation of the luminaire. After a few seconds, the luminary returns to normal operation. The manual test can be conducted only if the mains power supply and the battery are connected.

Indication LED status

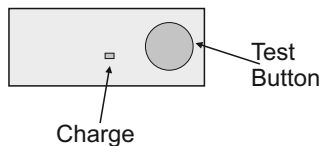
Charge

On: Fully charged.

Off: No battery (No charging current or disconnected battery).

Blink: Charging.

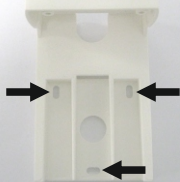
Indication / Control



MOUNTING METHODS

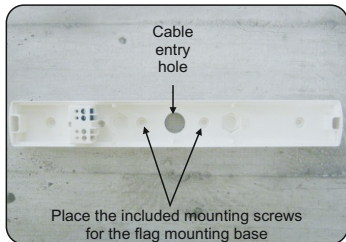
SURFACE MOUNTING ON A WALL (single side luminaire)

Place the included mounting screws in these holes of the plastic bracket

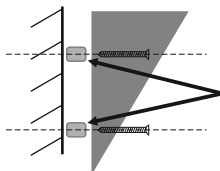
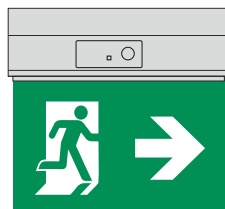
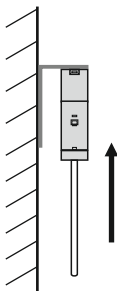


Cable entry hole

Place the included mounting screws for the flag mounting base



(INCLUDED IN THE PACKAGE)

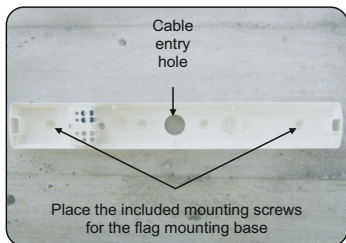


If necessary place the included spacers to mount the base.

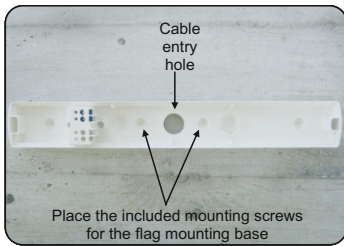
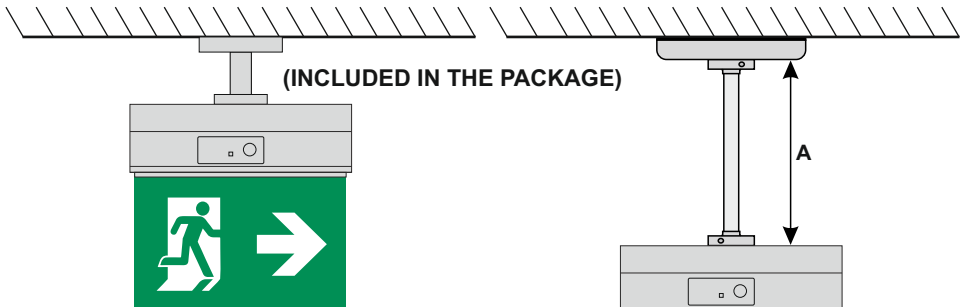
CEILING MOUNTED

Cable entry hole

Place the included mounting screws for the flag mounting base



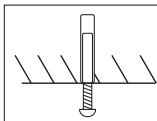
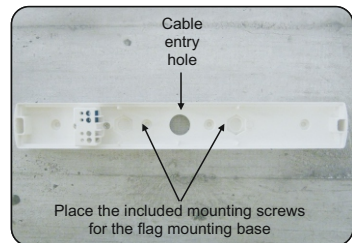
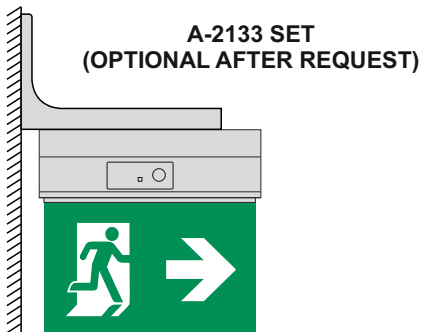
HANGING INSTALLATION



**A-2130, A-2131, A-2132 SET
(OPTIONAL AFTER REQUEST)**

	Tube
A-2130	A=1m
A-2131	A=0.5m
A-2132	A=0.25m

FLAG MOUNTED ON A WALL

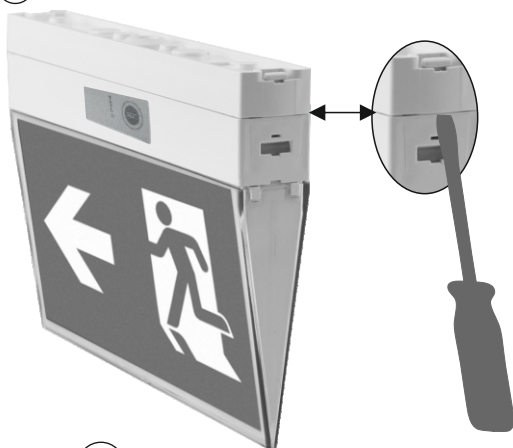


GENERAL!!

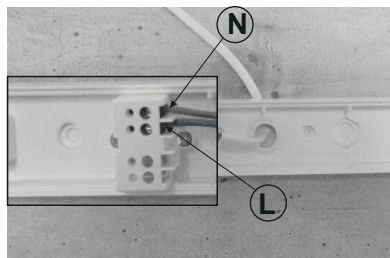
Measure the distance of the mounting holes and after the drilling place on these spots the mounting plugs and fasten the base with the mounting screws.

LUMINAIRE INSTALLATION PROCEDURE

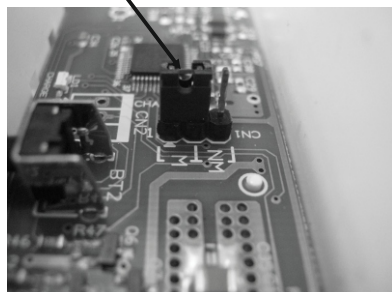
①



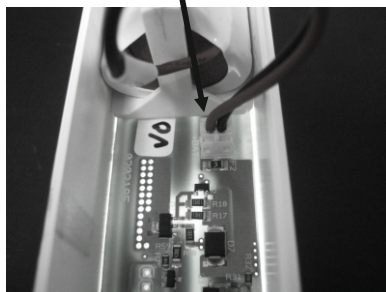
②



③



④



1. To install the luminaire you must first remove the top cover that has the terminal blocks, by pressing on the retaining hooks using a flat blade screw driver as shown in the photo.
2. Open a hole in the center of the cable grommet to pass the cable. Next connect the power cable to the terminal block.
3. The operation mode can be selected using the mode jumper. Depending on the position of the jumper you can select (M) maintained operation (this is the default selection) and (NM) non maintained operation.
4. Connect the battery cable to its respective connector on the board.
5. Reinstall the cover minding the orientation. The luminaire is now ready to be powered on.

Battery replacement.

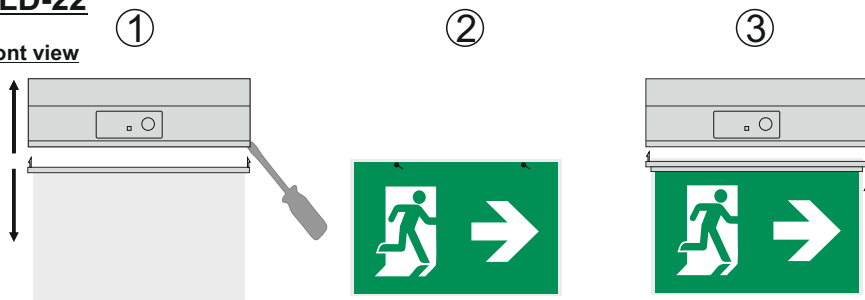
Can be conducted by qualified personnel and after isolating the mains power supply.

1. Follow step 1 in the installation procedure.
2. Remove the battery connector and carefully remove the battery from its base.
3. Install a new battery of the same type and rating (step 4 of the installation procedure).
4. Follow step 5 of the installation procedure and power the luminaire.

LEGEND INSTALLATION - REPLACEMENT

KLD-22

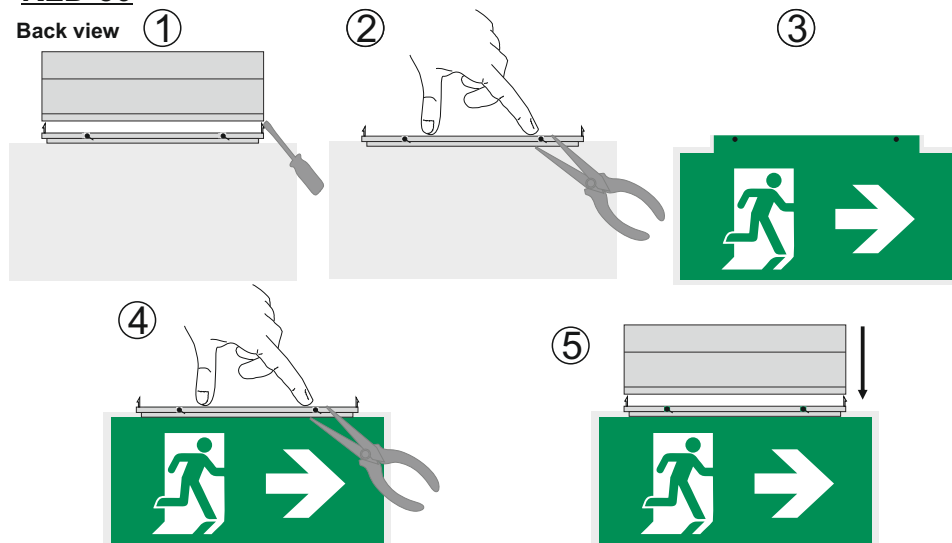
Front view



1. Remove the acrylic plate retaining base by pressing on the retaining clips using a flat blade screw driver and remove the acrylic plate from the main body.
2. Install the required marking legend by inserting the metallic pins of the acrylic plate in the holes of the marking legend.
3. Reinstall the complete acrylic plate with marking legends onto the plastic acrylic plate retaining base.
4. Install the complete assembly to the main body taking care of the orientation.

KLD-30

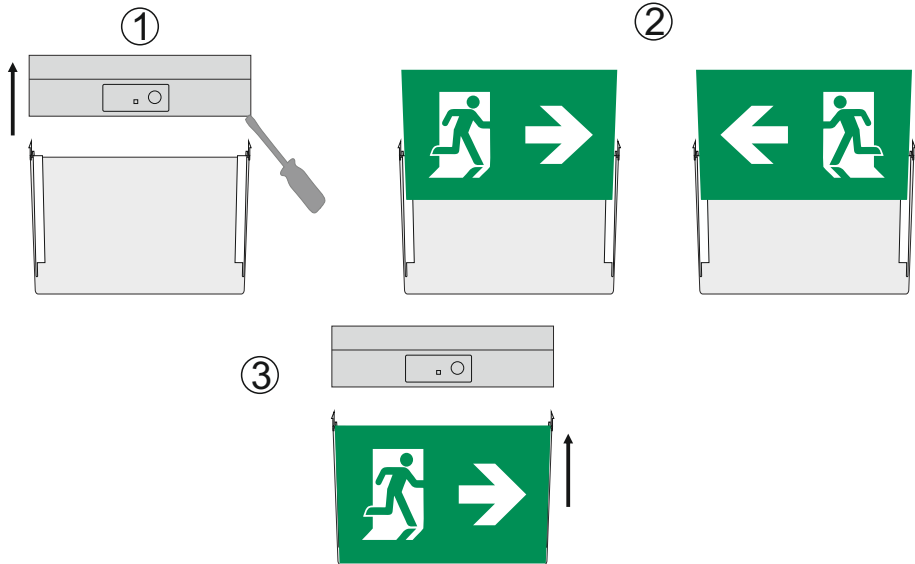
Back view



1. Remove the acrylic plate retaining base by pressing on the retaining clips using a flat blade screw driver and remove the acrylic plate from the main body.
2. Tilt the acrylic plate retaining base and use a needlenose plier to remove the metallic retaining pins. The pins are easily removed from the side where there are notches on the acrylic retaining plate.
3. Place the required marking legends on the acrylic plate and align the holes of the marking legend to the holes of the acrylic plate.
4. Install the acrylic plate retaining base on the top of the acrylic plate and marking legend assembly and insert the supplied metallic pins into the aligned acrylic plate and marking legend holes. Take care that the metallic pin passes from both holes. You can use a needle nose plier to make installation easier.
5. Install the complete assembly to the main body taking care of the orientation.

LEGEND INSTALLATION - REPLACEMENT

KLR-20



1. Remove the transparent legend retaining cover from the main base by pressing gently on the retaining clips using a flat blade screw driver.
2. Install the required marking legends by sliding them in front of the white plastic retainers..
3. Reinstall the complete assembly to the main base.

NOTE: LED= Light Emitting Diode

LABELING EXPLANATION:

X: Self contained

1: Maintained (*)

A: Including test device

E: With non-replacable lamp(s) and/or battery

G: Internally illuminated safety sign

180: 3 hours duration

Non Maintained operation: The luminaire lights its illumination source, only in power supply's failure.

(*) Maintained operation: The luminaire lights its illumination source, when it is powered by the mains power supply or not.

ATTENTION!!!



The light source of this luminaire is not replaceable when the light source reaches its end of life the whole luminaire shall be replaced.

WARRANTY

Olympia Electronics guarantees the quality, condition and operation of the goods. The period of warranty is specified in the official catalogue of Olympia Electronics and also in the technical leaflet, which accompanies each product. This warranty ceases to exist if the buyer does not follow the technical instructions included in official documents given by Olympia Electronics or if the buyer modifies the goods provided or has any repairs or re-setting done by a third party, unless Olympia Electronics has fully agreed to them in writing. Products that have been damaged can be returned to the premises of our company for repair or replacement, as long as the warranty period is valid.

Olympia Electronics reserves the right to repair or to replace the returned goods and to or not charge the buyer depending on the reason of defection. Olympia Electronics reserves the right to charge or not the buyer the transportation cost.

HEAD OFFICE

72nd km. O.N.R. Thessaloniki-Katerini
P.C. 60300 P.O. Box 06 Eginio Pierias Greece

www.olympia-electronics.gr

info@olympia-electronics.gr